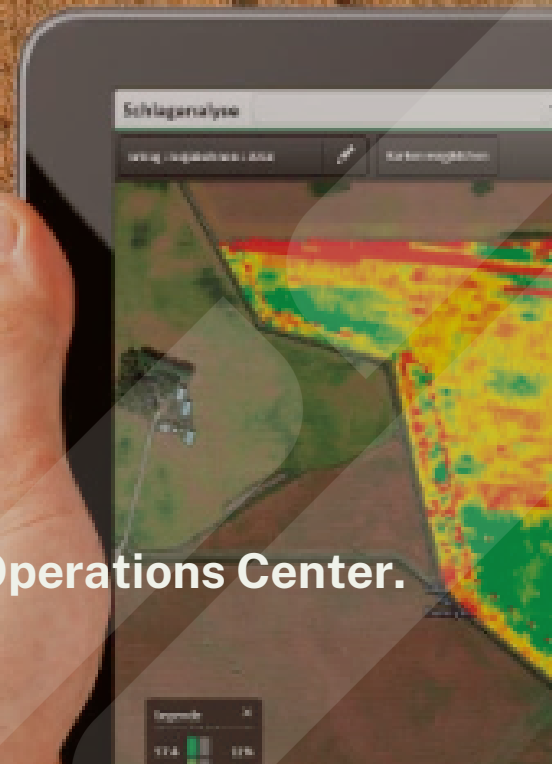


OPERATIONS CENTER



ADD OPERATOR

Adding an Operator to an organization in Operations Center.

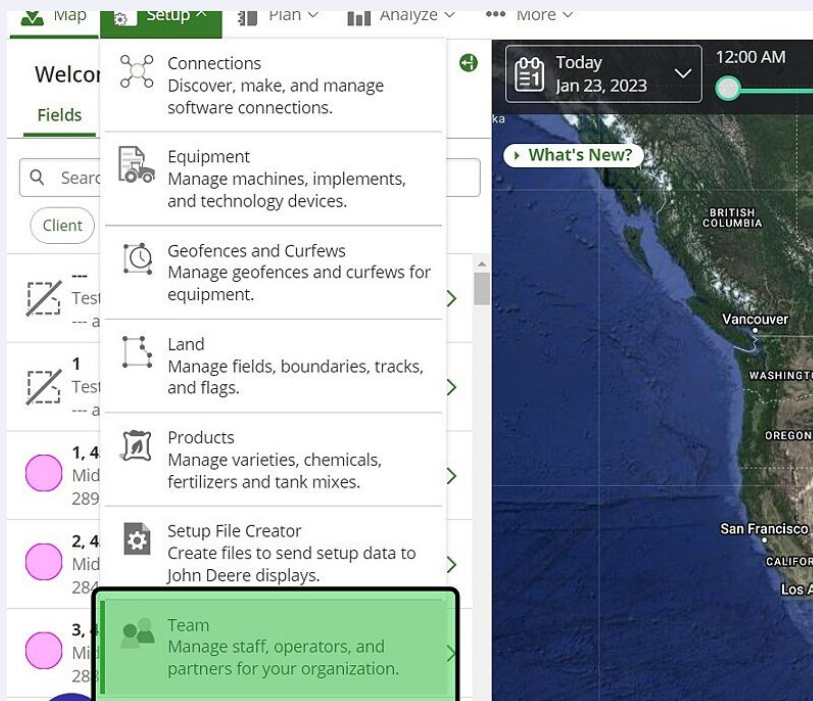


Operations Center - Add Operator

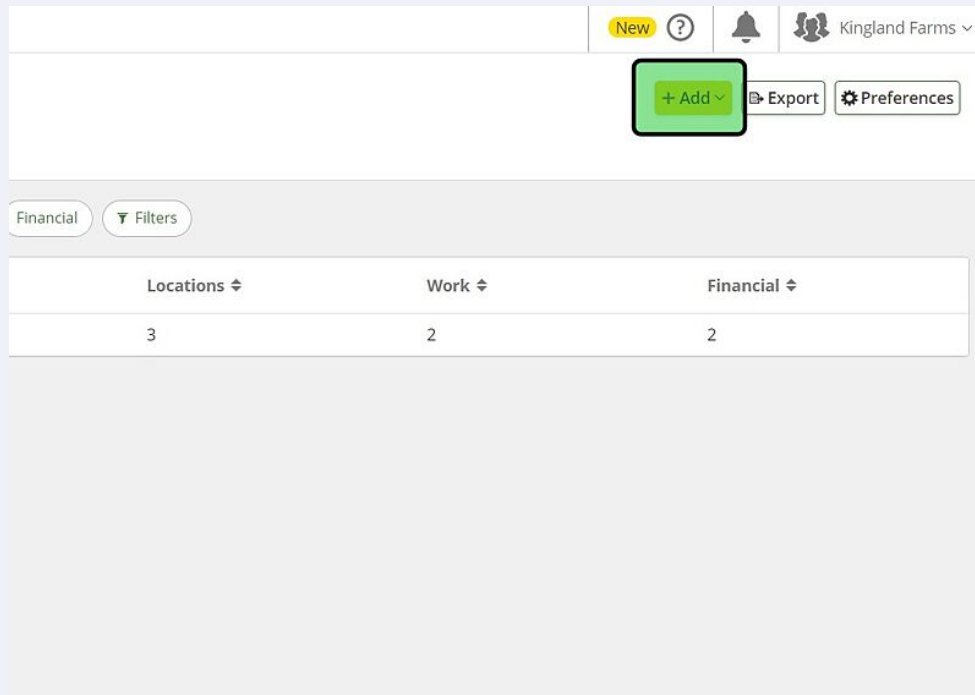
Adding an Operator to an organization in Operations Center

- 1 Open Operations Center and navigate to the organization where the user wants to add an operator

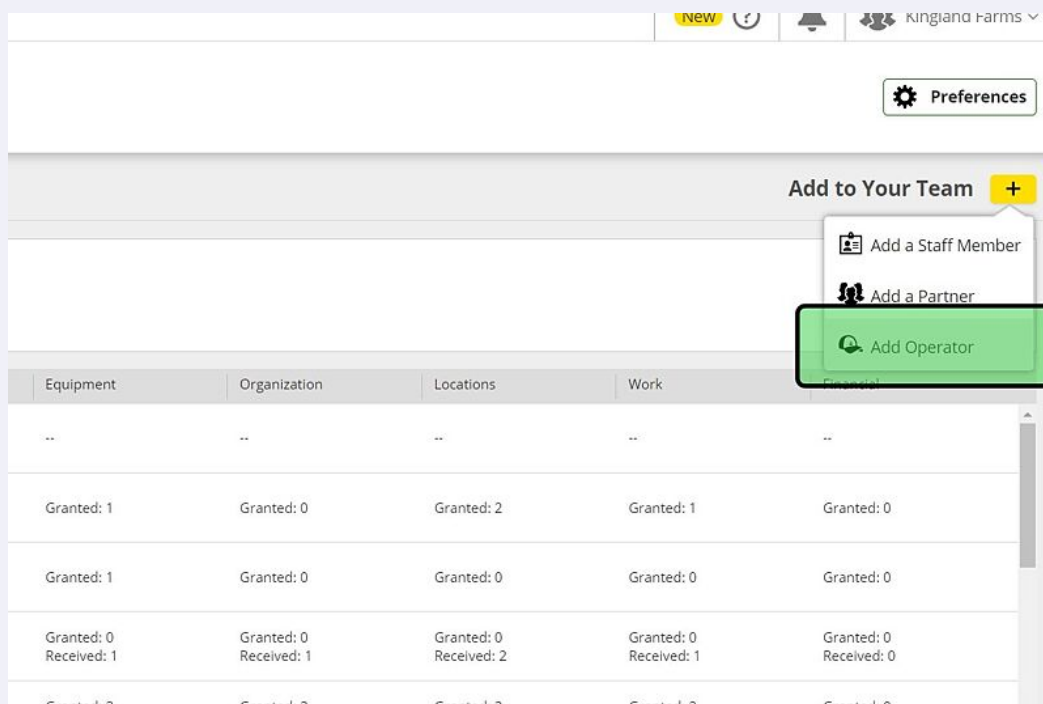
- 2 Select "Team: Manage staff, operators, and partners for your organization." under the "Setup" menu



3 Select "Add"



4 Click "Add Operator"



5 Type the operator's name in the "Operator Name" field.

A screenshot of a web application interface showing a modal form for adding an operator. The form has two radio buttons at the top: "Create New" (selected) and "Add from existing staff members". Below this, there are two input fields. The first field, labeled "Operator Name", is highlighted with a green border and contains a vertical cursor. The second field, labeled "Operator License (Optional)", is empty. At the bottom of the form, there is a "+ Add Another Operator" button and two buttons: "Cancel" and "SAVE". The background shows a blurred interface with text like "36219 23 Forest Cit", "Export", and "Connection Granted: 1".

6 Add the operator's license number to the "Operator License (Optional)" field.

A screenshot of the same web application interface as in step 5. The "Operator Name" field now contains the text "Anthony". The "Operator License (Optional)" field is highlighted with a green border and contains a vertical cursor. The rest of the form, including the "Add Another Operator" button and "Cancel" and "SAVE" buttons, remains the same. The background interface is also visible.

7

Click "SAVE". The Operator will now be available in the Team list under the Operator section.

36219 23
Forest Cit

Create New
 Add from existing staff members

Operator Name
Anthony

Operator License (Optional)
12345

+ Add Another Operator

Cancel SAVE

Export

ne

dj

nate FieldView™

ertConnect

Connection

Granted: 1

Granted: 0

Granted: 0

Wo

Gr

Gr